

Unità di guida inox

Stainless steel guide units



AISI 304 - AISI 316

UNITÀ DI GUIDA INOX Ø16-100

STAINLESS STEEL GUIDE UNIT Ø16-100

Le unità di guida (slitte) sono accessori per cilindri a norme ISO 15552 e ISO 6432.
Sono impiegate per realizzare spostamenti di carichi importanti abbinati ad elevata velocità e a precisione di posizionamento.

Guide units (slides) are accessories for cylinders according to ISO 15552 and ISO 6432 standards.
They are used to realize movements of important loads combined with high speed and positioning accuracy.



Informazioni tecniche *Technical information*

Piastra <i>Plate</i>	AISI 304 / AISI316	Boccola guida <i>Guiding bush</i>	PTFE
Corpo <i>Body</i>	AISI 304 / AISI316	Stelo <i>Rod</i>	AISI 304 / AISI316
Guarnizioni <i>Seals</i>	NBR	Temperatura di impiego <i>Working temperature</i>	-10°C +80°C con aria secca -10°C +80°C with dry air

Chiavi di codifica *Cylinders key code*

Versione <i>Version</i>	Diametro <i>Diameter</i>	Materiale <i>Material</i>	Corsa <i>Stroke</i>
NRB Unità di guida ad H con boccole <i>H type guide unit with slide bearings</i>	016	I AISI 304	5 ... 500
NRU Unità di guida ad U con boccole <i>U type guide unit with slide bearings</i>	020	Y AISI 316	
	025		
	032		
	040		
	050		
	063		
	080		
	100		

Esempio *Example* (NRB040Y100)

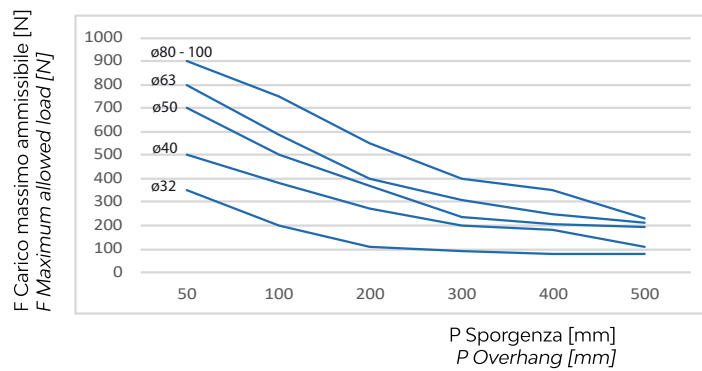
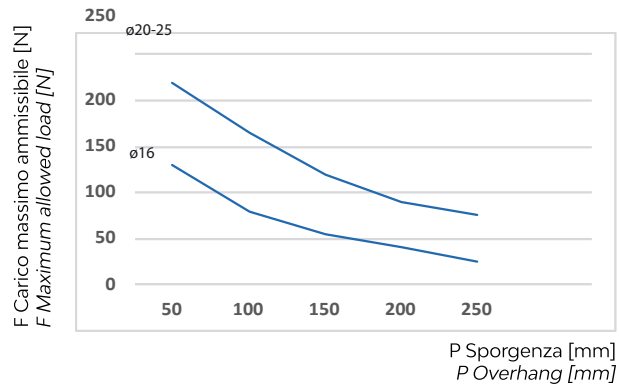
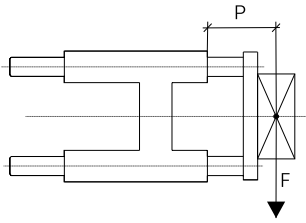
NRB	040	Y	100
------------	-----	---	-----

Corse standard [mm] *Standard strokes [mm]*

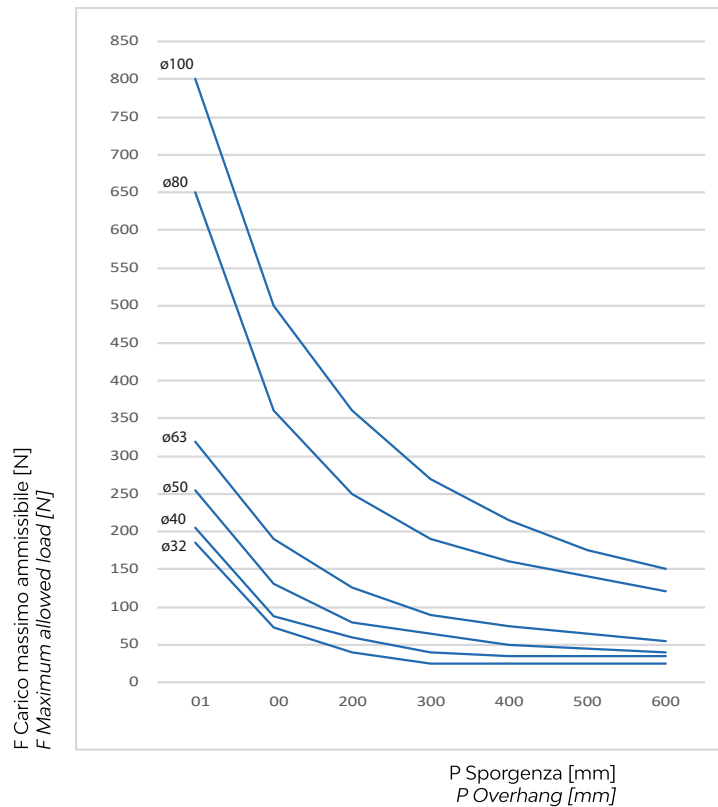
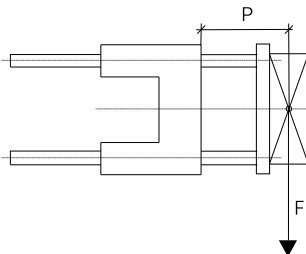
Ø	Corse standard [mm] <i>Standard strokes [mm]</i>						
16	50	100	160	200	250	-	-
20	50	100	160	200	250	-	-
25	50	100	160	200	250	320	500
32	50	100	160	200	250	320	500
40	50	100	160	200	250	320	500
50	50	100	160	200	250	320	500
63	50	100	160	200	250	320	500
80	50	100	160	200	250	320	500
100	50	100	160	200	250	320	500

Carichi massimi Maximum loads

Tipo H H type



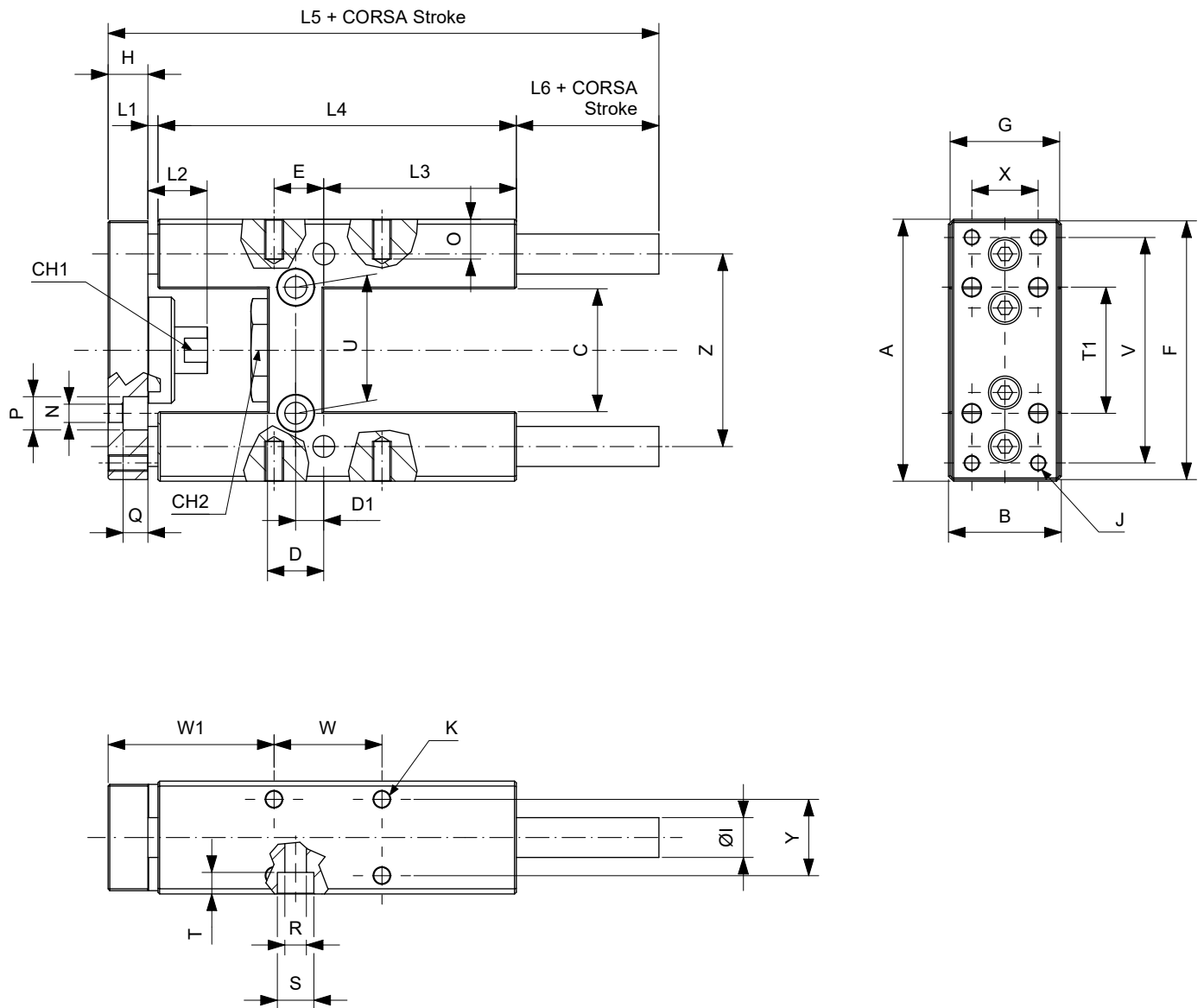
Tipo U U type



UNITÀ DI GUIDA AD H PER CILINDRI ISO 6432 Ø16-25

GUIDING UNIT TYPE H FOR ISO 6432 CYLINDERS Ø16-25

NRBØI... NRBØY...



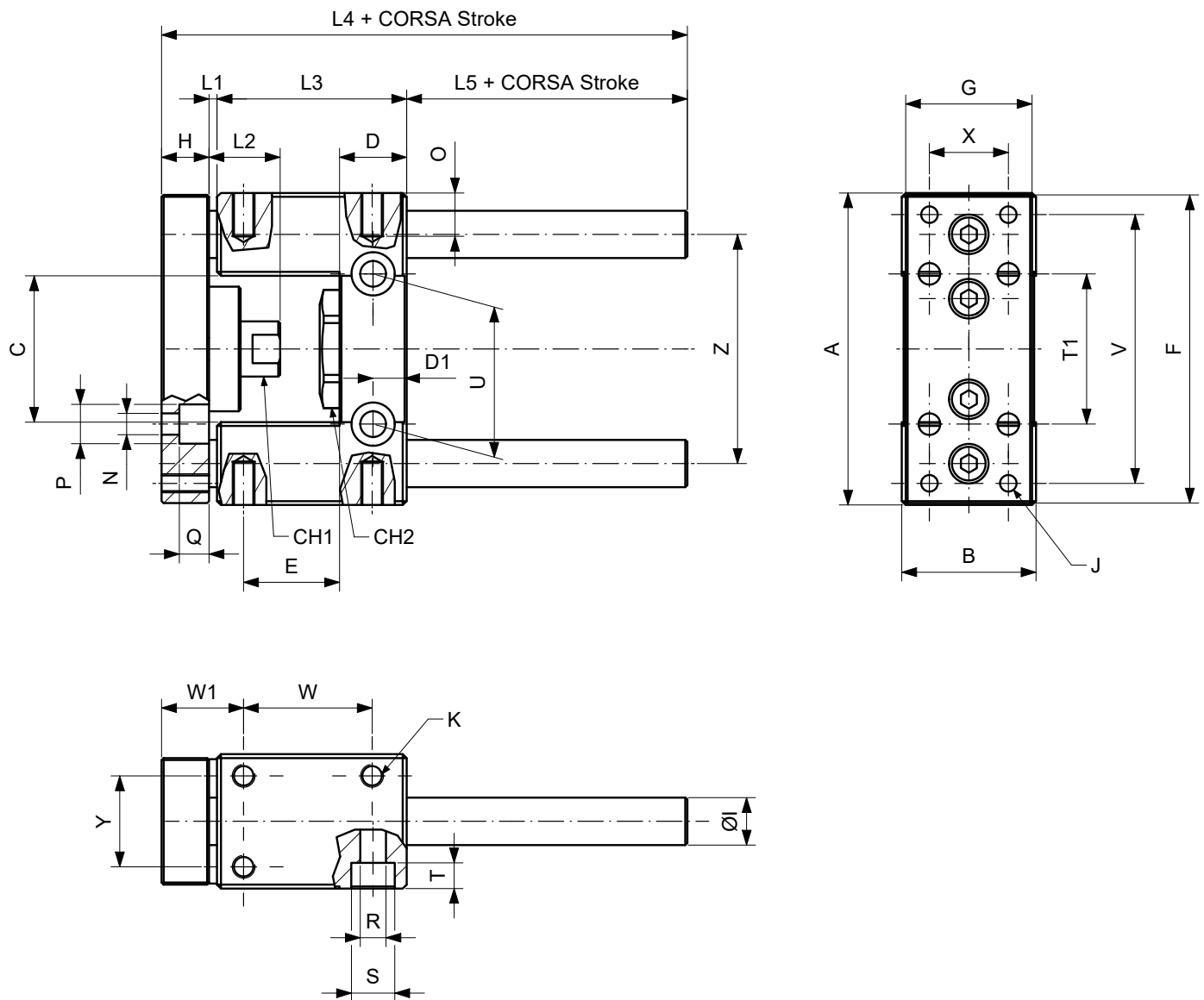
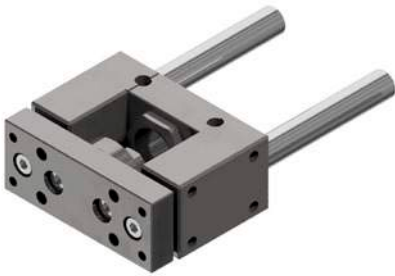
Ø mm	A	B	C	CH1	CH2	D	D1	E	F	G	H	ØI	J	K	L1	L2	L3
16	69	30	30	8	24	12	6	8	66	29	10	10	M4	M4	25	18	46
20	79	34	37	12	27	17	8,5	15	78	32	12	12	M5	M6	3	18	58
25	79	34	37	12	27	17	8,5	15	78	32	12	12	M5	M6	3	18	58

Ø mm	L4	L5	L6	N	O	P	Q	R	S	T	T1	U	V	W	W1	X	Y	Z
16	68	123,5	73	4,5	6	8	4,5	5,5	9	5,5	32	24	58	18	/	18	22	49,5
20	108	166	43	5,5	9	10	7,5	6,5	11	6,5	38	38	68	32,5	50	20	23	58
25	108	166	43	5,5	9	10	7,5	6,5	11	6,5	38	38	68	32,5	50	20	23	58

UNITÀ DI GUIDA AD U PER CILINDRI ISO 6432 Ø16-25

GUIDING UNIT TYPE U FOR ISO 6432 CYLINDERS Ø16-25

NRUØI... NRUØY...



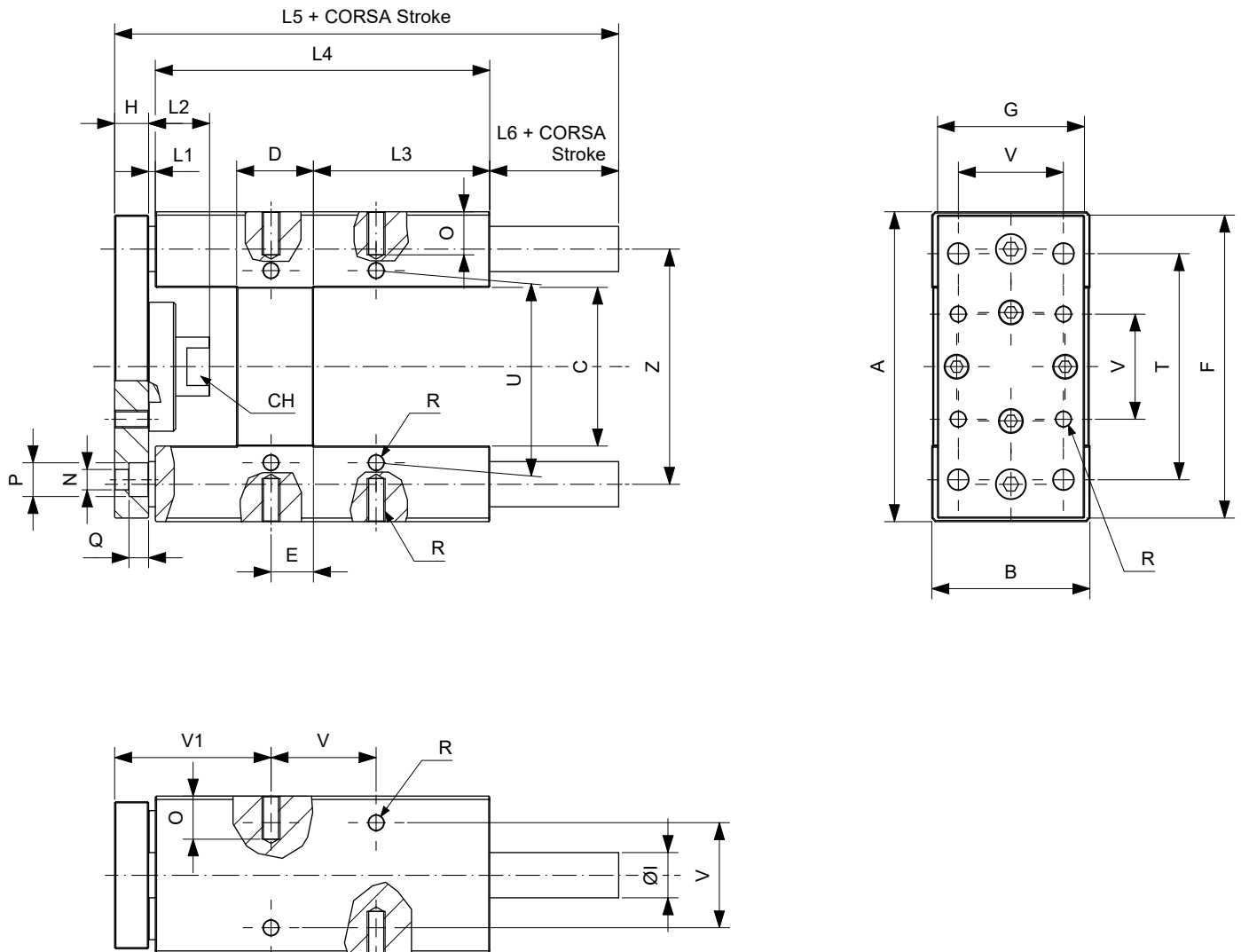
Ø mm	A	B	C	CH1	CH2	D	D1	E	F	G	H	ØI	J	K	L1	L2	L3
16	69	30	30	8	24	12	6	20	66	29	10	10	M4	M4	3	15	38
20 - 25	79	34	37	12	27	17	8,5	24	78	32	12	12	M5	M6	3	18	48

Ø mm	L4	L5	N	O	P	Q	R	S	T	T1	U	V	W	W1	X	Y	Z
16	66,5	15,5	4,5	6	7,5	4,5	5,5	9	5,5	32	24	58	25	19,5	18	22	49,5
20 - 25	83	20	5,5	9	10	7,5	6,5	11	6,5	38	38	68	33	21,8	20	23	58

UNITÀ DI GUIDA AD H PER CILINDRI ISO 15552 Ø32-100

GUIDING UNIT TYPE H FOR ISO 15552 CYLINDERS Ø32-100

NRBØI... NRBØY...

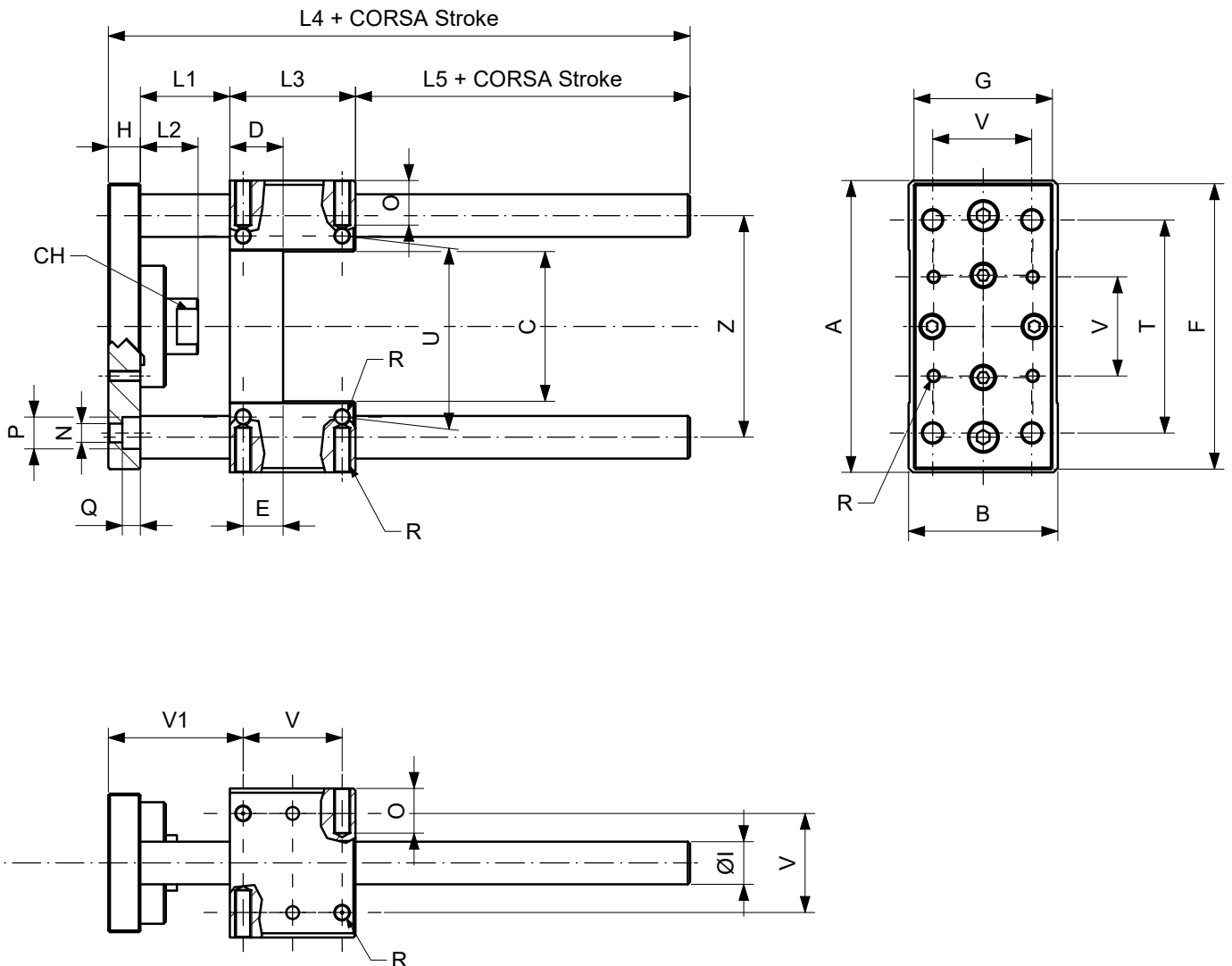
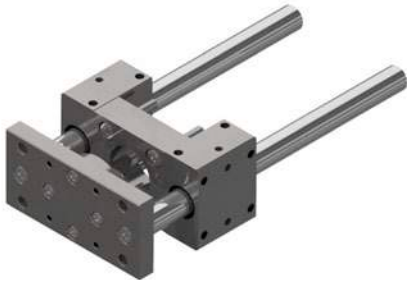


Ø	A	B	C	CH	D	E	F	G	H	ØI	L1	L2	L3	L4	L5	L6	N	O	P	Q	R	T	U	V	V1	Z
32	97	49	51	15	24	4,3	93	45	12	12	3	19	75	125	187	47	6,6	12	11	6,5	M6	78	61	32,5	60,7	74
40	115	58	58,2	15	28	11	112	55	12	16	3	24	80	140	207	52	6,6	12	11	6,5	M6	84	69	38	64	87
50	137	70	70,2	20	34	18,8	134	65	15	20	3	27	78	148	223	57	9	16	15	8,5	M8	100	85	46,5	69,2	104
63	152	85	85,2	20	34	15,3	147	80	15	20	3	27	106	178	243	47	9	16	15	9	M8	105	100	56,5	74,7	119
80	189	105	105,5	26	50	25	180	100	20	25	3	27	111	195	267	49	11	20	18	11	M10	130	130	72	82	148
100	213	130	130,5	26	55	30	206	120	20	25	3	27	128	218	290	49	11	20	18	11	M10	150	150	89	83	173

UNITÀ DI GUIDA AD U PER CILINDRI ISO 1552 Ø32-100

GUIDING UNIT TYPE U FOR ISO 1552 CYLINDERS Ø32-100

NRUØI... NRUØY...



Ø	A	B	C	CH	D	E	F	G	H	ØI	L1	L2	L3	L4	L5	N	O	P	Q	R	T	U	V	V1	Z
32	97	49	51	15	17	9,25	93	45	12	12	42	25	48	120	18	6,6	12	11	6,5	M6	78	61	32,5	61,75	74
40	115	58	58,2	15	21	11	112	55	12	16	43	25	58	130	17	6,6	12	11	6,5	M6	84	69	38	65	87
50	137	70	70,2	20	25	18,8	134	65	15	20	49	29	59	143	20	9	16	15	8,5	M8	100	85	46,5	70,2	104
63	152	85	85,2	20	25	15,3	147	80	15	20	49	29	76	161	21	9	16	15	9	M8	105	100	56,5	73,7	119
80	189	105	105,5	26	34	25	180	100	20	25	53	37	90	193	30	11	20	18	11	M10	130	130	72	82	148
100	213	130	130,5	26	39	28,5	206	120	20	25	54	37	110	214	30	11	20	18	11	M10	150	150	89	84,5	173



Cy.Pag. S.r.l.

Via del Commercio, 13 - 23017 - Morbegno (SO) - Italy

phone: +39 0342 605011 - **fax:** +39 0342 614971 - **email:** info@cypag.com

rev. 00/09.2023