



SERIE  
**C6B**

**Cilindri tondi inox profilo pulito**  
**S.S. round cylinder with clean profile**

## Cilindri tondi inox profilo pulito S.S. round cylinders with clean profile



con lubrificante approvato FDA  
with lubricant FDA approved

### Chiavi di codifica Cylinders key code

C 6 B 0 4 0 D 0 0 5 0 F S T

Versione Version	Diametro Diameter	Tipo costruttivo Design type	Corsa Stroke	Versione Version	Varianti Variants
C6B Cilindro tondo inox S.S. round cylinders	032	A Con testata anteriore filettata With threaded front cover	0-1000 mm	D Doppio effetto magnetico Double acting magnetic	ST Standard
	040	B Con testate filettate With threaded covers		F Doppio effetto magnetico ammortizzato Double acting magnetic cushioned	VT Tutto FKM All FKM
050	C Con cerniera maschio MP4 With male hinge MP4			M Doppio effetto passante magnetico Double acting through rod magnetic	VG Guarnizione stelo FKM FKM rod seal
063		D Con cerniera maschio snodata MP6 With male hinge w/spherical bearing MP6		P Doppio effetto passante magnetico ammortizzato Double acting through rod magnetic cushioned	SD Senza dadi Without nuts
				E Con fori filettati sulla testata posteriore With threaded holes on the rear cover	
		F Con cerniera femmina stretta AB6 With narrow female hinge AB6			LT Bassa temperatura Low temperature
		G Con perni anteriori With front pivot			P... Stelo prolungato (mm) Extended piston rod (mm)
		H Con perni posteriori With rear pivot			

### Corse standard Standard strokes

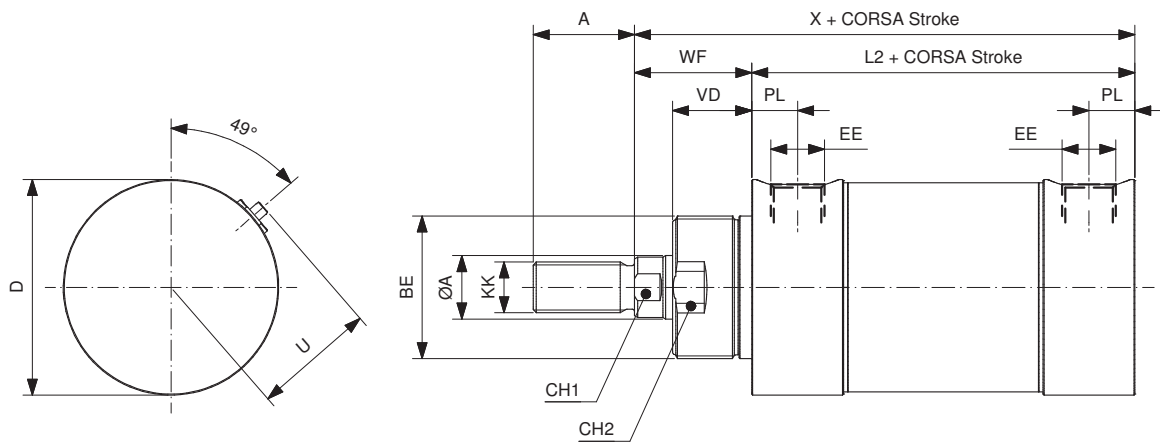
∅	10	25	50	80	100	125	160	200	250	300	320	350	400	450	500	550	600	650	700	750	800	850	900	950	1000
32	•	•	•	•	•	•	•	•	•	•	•	•	•	•	•	•	•	•	•	•	•	•	•	•	•
40	•	•	•	•	•	•	•	•	•	•	•	•	•	•	•	•	•	•	•	•	•	•	•	•	•
50	•	•	•	•	•	•	•	•	•	•	•	•	•	•	•	•	•	•	•	•	•	•	•	•	•
63	•	•	•	•	•	•	•	•	•	•	•	•	•	•	•	•	•	•	•	•	•	•	•	•	•

Materiali - Materials	
Testate.....	Acciaio inox AISI316
Covers.....	Stainless steel AISI316
Tubo.....	Acciaio inox AISI316
Tube.....	Stainless steel AISI316
Pistone.....	Alluminio
Piston.....	Aluminium
Guarnizioni.....	NBR/PU
Seals.....	
Boccola guida.....	Bronzo sinterizzato
Guiding bush.....	Sintered bronze
Stelo.....	Acciaio inox AISI316
Rod.....	Stainless steel AISI316

Caratteristiche tecniche - Technical features	
Fluido.....	Aria compressa filtrata lubrificata e non
Fluid.....	Filtered and lubricated or not compressed air
Temperatura di impiego.....	-20°C +80°C con aria secca
Working temperature.....	-20°C +80°C with dry air
Pressione Max.....	max 10 bar
Max pressure.....	

Con testata anteriore filettata  
With threaded front cover

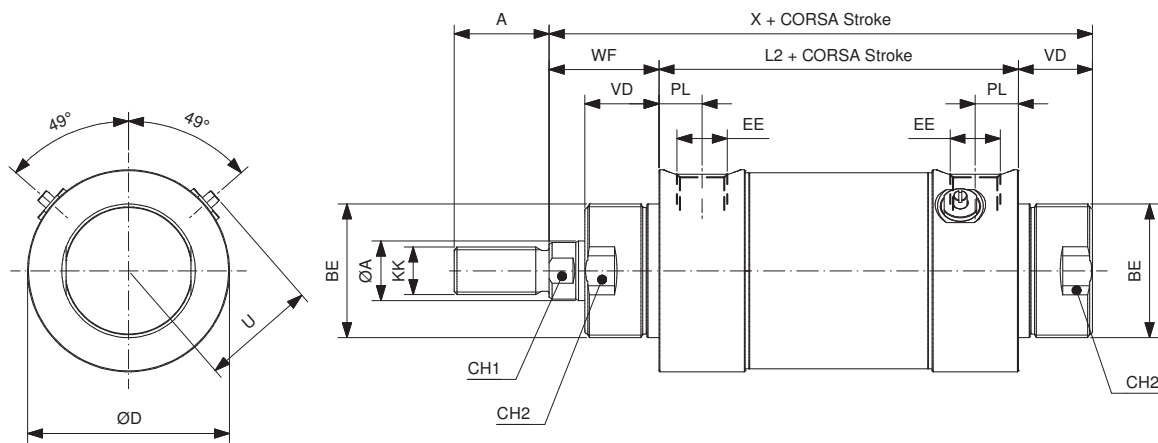
C6BøA...DST - C6BøA...FST



ø	A	BE	øD	EE	KK	øA	PL	VD	U	WF	L2	X	CH1	CH2
32	22	M30x1,5	36	G1/8	M10x1,25	12	10,5	20	26,5	26	94	120	10	29
40	24	M38x1,5	45	G1/4	M12x1,25	16	12	22	31	30	105	135	13	36
50	32	M45x1,5	54	G1/4	M16x1,5	20	11,5	26	39,5	37	106	143	17	42
63	32	M45x1,5	68	G3/8	M16x1,5	20	14,5	25	38,5	37	121	158	17	42

Con testate filettate  
With threaded covers

C6BøB...DST - C6BøB...FST



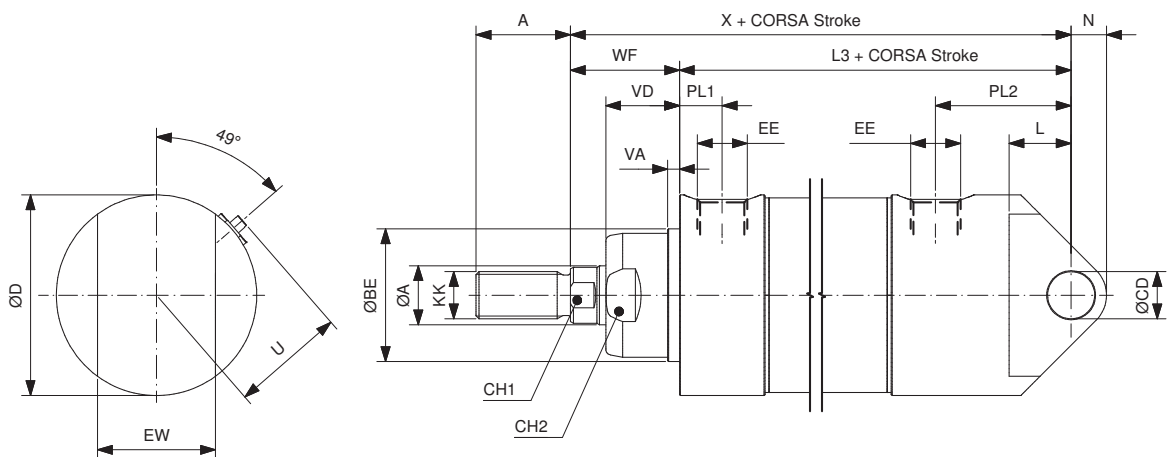
ø	A	BE	øD	EE	KK	øA	PL	VD	U	WF	L2	X	CH1	CH2
32	22	M30x1,5	36	G1/8	M10x1,25	12	10,5	20	26,5	26	94	140	10	29
40	24	M38x1,5	45	G1/4	M12x1,25	16	12	22	31	30	105	157	13	36
50	32	M45x1,5	54	G1/4	M16x1,5	20	11,5	26	39,5	37	106	169	17	42
63	32	M45x1,5	68	G3/8	M16x1,5	20	14,5	25	38,5	37	121	183	17	42

Cilindri non a norma  
Cylinders not according to standard

Cilindri tondi inox profilo pulito - S.S. round cylinders with clean profile

Con cerniera maschio MP4  
With male hinge MP4

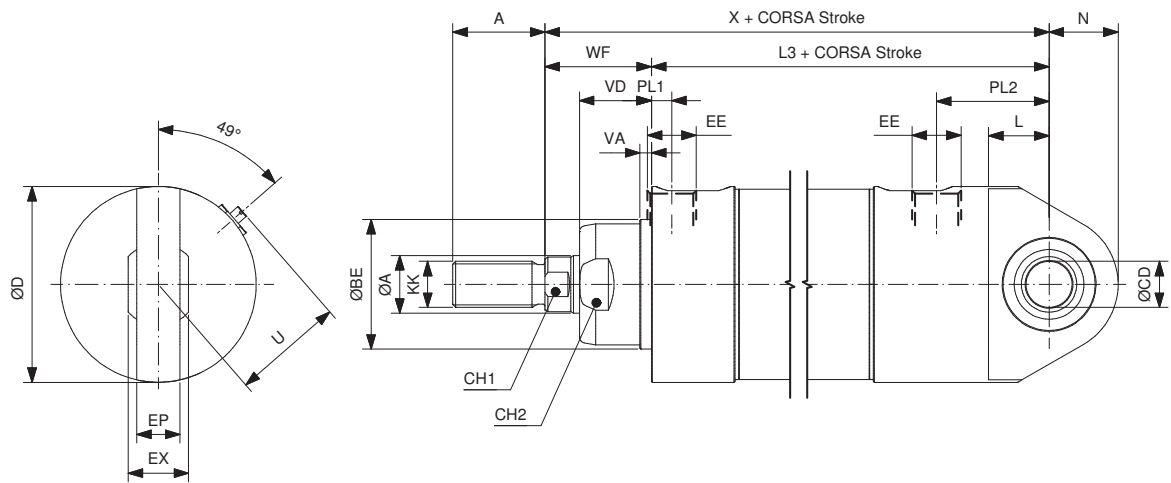
C6BøC...DST - C6BøC...FST



ø	A	øBE	øCD	øD	EE	EW	KK	øA	L	N	PL2	PL1	VD	VA	U	WF	L3	X	CH1	CH2
32	22	30	10	36	G1/8	26	M10x1,25	12	13	9	32,5	10,5	20	4	26,5	26	116	142	10	29
40	24	35	12	45	G1/4	28	M12x1,25	16	16	10	37	12	22	4	31	30	130	160	13	33
50	32	40	12	54	G1/4	32	M16x1,5	20	16,5	12	37	11,5	26	4	39,5	37	133	170	17	38
63	32	45	16	68	G3/8	40	M16x1,5	20	21	12	46	14,5	25	4	38,5	37	153	190	17	42

Con cerniera maschio snodata MP6  
With male hinge with spherical bearing MP6

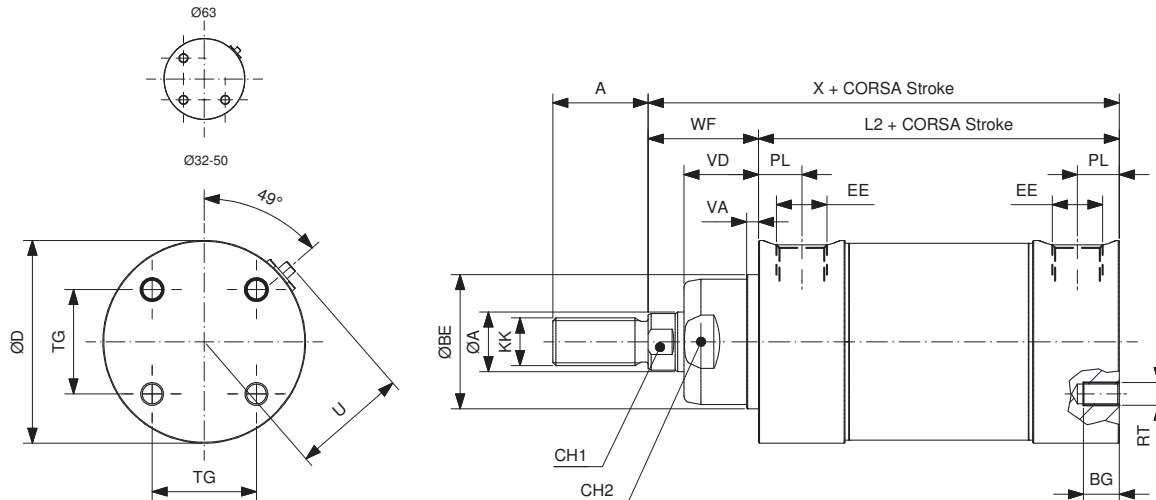
C6BøD...DST - C6BøD...FST



ø	A	øBE	øCD	øD	EE	EP	EX	KK	øA	L	N	PL2	PL1	VD	VA	U	WF	L3	X	CH1	CH2
32	22	30	10	36	G1/8	10,5	14	M10x1,25	12	13	15	32,5	10,5	20	4	26,5	26	116	142	10	29
40	24	35	12	45	G1/4	12	16	M12x1,25	16	16	19	37	12	22	4	31	30	130	160	13	33
50	32	40	12	54	G1/4	15	21	M16x1,5	20	16,5	20,5	38,5	11,5	26	4	39,5	37	133	170	17	38
63	32	45	16	68	G3/8	15	21	M16x1,5	20	21	24	46,5	14,5	25	4	38,5	37	153	190	17	42

Con fori filettati sulla testata posteriore  
With threaded holes on the rear cover

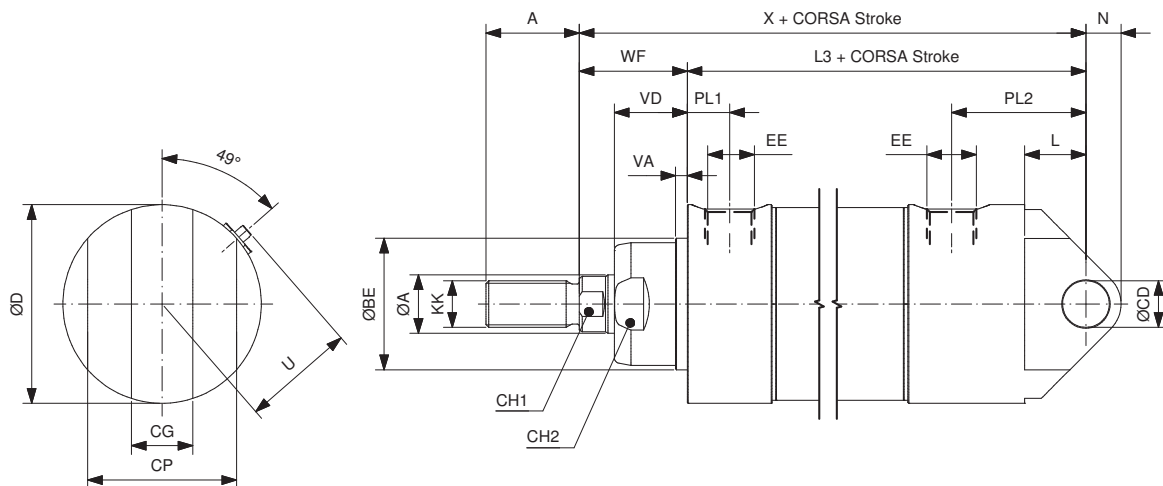
C6BøE....DST - C6BøE....FST



ø	A	BE	BG	øD	EE	KK	øA	PL	RT	TG	VD	VA	U	WF	L2	X	CH1	CH2
32	22	30	6	36	G1/8	M10x1,25	12	10,5	M4	19	20	4	26,5	26	94	120	10	29
40	24	35	8	45	G1/4	M12x1,25	16	12	M5	24	22	4	31	30	105	135	13	33
50	32	40	9	54	G1/4	M16x1,5	20	11,5	M6	28	26	4	39,5	37	106	143	17	38
63	32	45	12	68	G3/8	M16x1,5	20	14,5	M8	35	25	4	38,5	37	121	158	17	42

Con cerniera femmina stretta AB6  
With narrow female hinge AB6

C6BøF....DST - C6BøF....FST



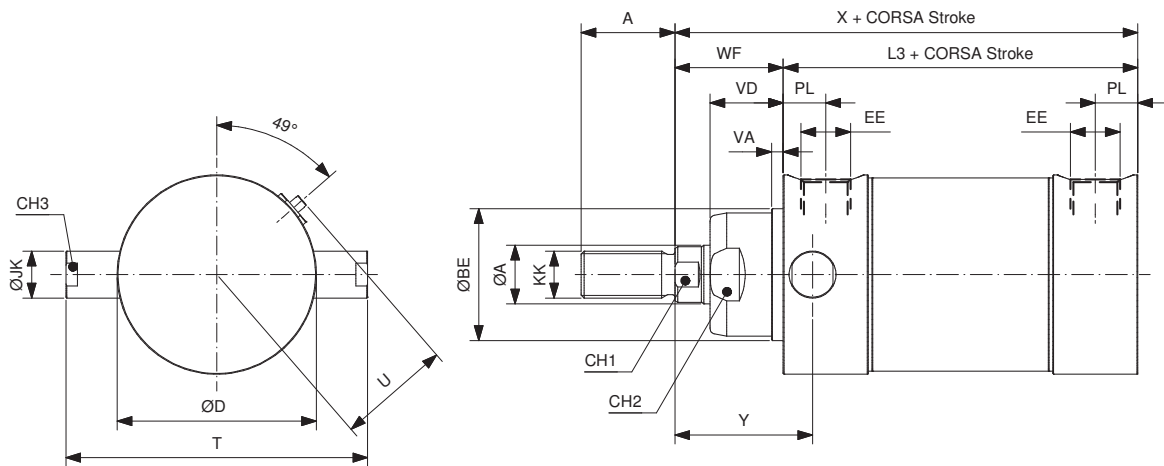
ø	A	BE	øCD	øD	EE	CG	CP	KK	øA	L	N	PL2	PL1	VD	VA	U	WF	L3	X	CH1	CH2
32	22	30	10	36	G1/8	14	34	M10x1,25	12	13	9	32,5	10,5	20	4	26,5	26	116	142	10	29
40	24	35	12	45	G1/4	16	40	M12x1,25	16	16	10	37	12	22	4	31	30	130	160	13	33
50	32	40	12	54	G1/4	21	45	M16x1,5	20	16,5	12	37	11,5	26	4	39,5	37	133	170	17	38
63	32	45	16	68	G3/8	21	51	M16x1,5	20	21	12	46	14,5	25	4	38,5	37	153	190	17	42

Cilindri non a norma  
Cylinders not according to standard

Cilindri tondi inox profilo pulito - S.S. round cylinders with clean profile

Con perni anteriori  
With front pivot

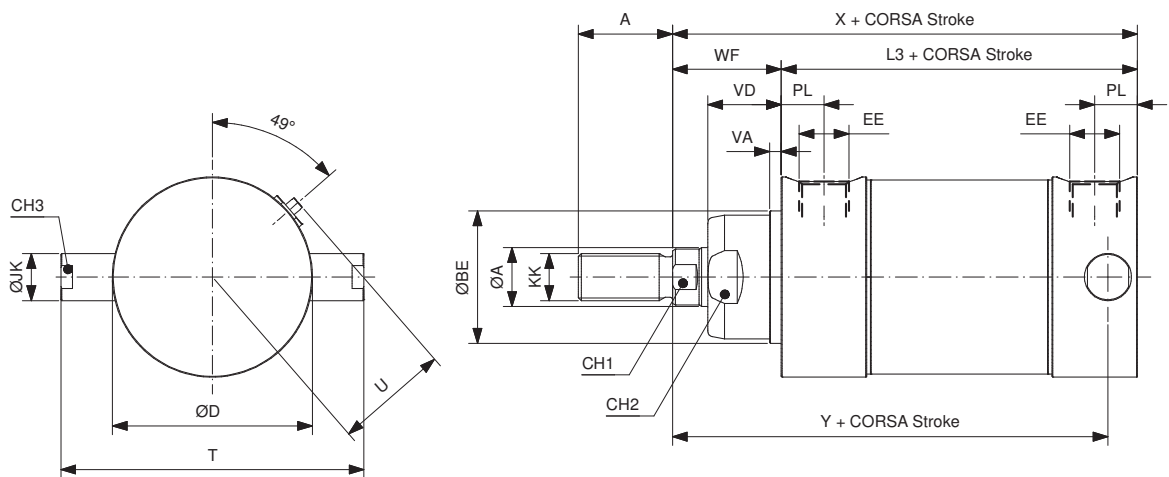
C6BøG...DST - C6BøG...FST



ø	øJK	T	Y	A	øBE	øD	EE	KK	øA	PL	VD	VA	U	WF	L3	X	CH1	CH2	CH3
32	12	67	39	22	30	36	G1/8	M10x1,25	12	10,5	20	4	26,5	26	94	120	10	29	10
40	12	76	43	24	35	45	G1/4	M12x1,25	16	12	22	4	31	30	105	135	13	33	10
50	16	89	40	32	51	54	G1/4	M16x1,5	20	11,5	26	4	39,5	37	106	143	17	38	14
63	16	103	47	32	47	68	G3/8	M16x1,5	20	14,5	25	4	38,5	37	121	158	17	42	14

Con perni posteriori  
With rear pivot

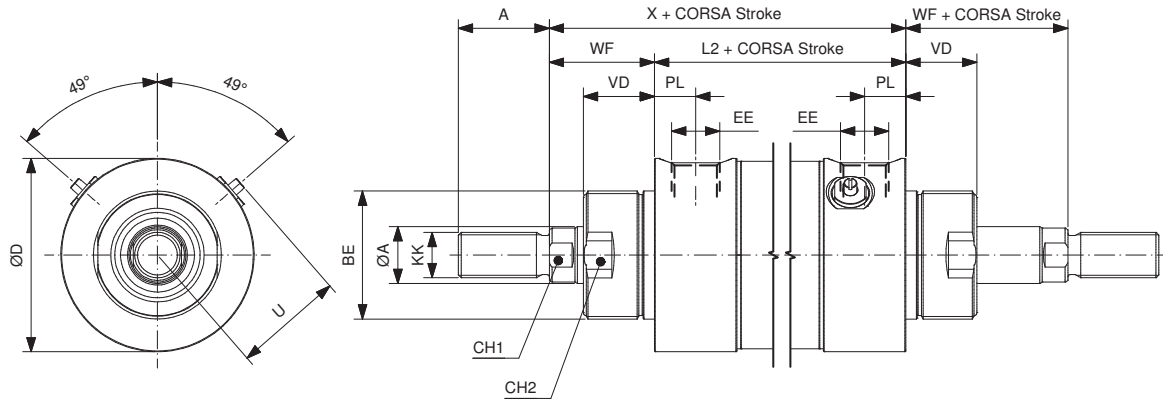
C6BøH...DST - C6BøH...FST



ø	øJK	T	Y	A	øBE	øD	EE	KK	øA	PL	VD	VA	U	WF	L3	X	CH1	CH2	CH3
32	12	67	110	22	30	36	G1/8	M10x1,25	12	10,5	20	4	26,5	26	94	120	10	29	10
40	12	76	122	24	35	45	G1/4	M12x1,25	16	12	22	4	31	30	105	135	13	33	10
50	16	89	129	32	40	54	G1/4	M16x1,5	20	11,5	26	4	39,5	37	106	143	17	38	14
63	16	103	148	32	45	68	G3/8	M16x1,5	20	14,5	25	4	38,5	37	121	158	17	42	14

Cilindri non a norma  
Cylinders not according to standard

Cilindri tondi inox profilo pulito - S.S. round cylinders with clean profile



$\varnothing$	A	BE	$\varnothing D$	EE	KK	$\varnothing A$	PL	VD	U	WF	L2	X	CH1	CH2
32	22	M30x1,5	36	G1/8	M10x1,25	12	10,5	20	26,5	26	94	120	10	29
40	24	M38x1,5	45	G1/4	M12x1,25	16	12	22	31	30	105	135	13	33
50	32	M45x1,5	54	G1/4	M16x1,5	20	11,5	26	39,5	37	106	143	17	38
63	32	M45x1,5	68	G3/8	M16x1,5	20	14,5	25	38,5	37	121	158	17	42

Cy.pag. S.r.l.  
Via del Commercio, 13  
23017 Morbegno (SO)  
Italy