

CILINDRI ISO 15552 TIRANTATI Ø32-125 ISO 15552 TIE RODS CYLINDERS Ø32-125

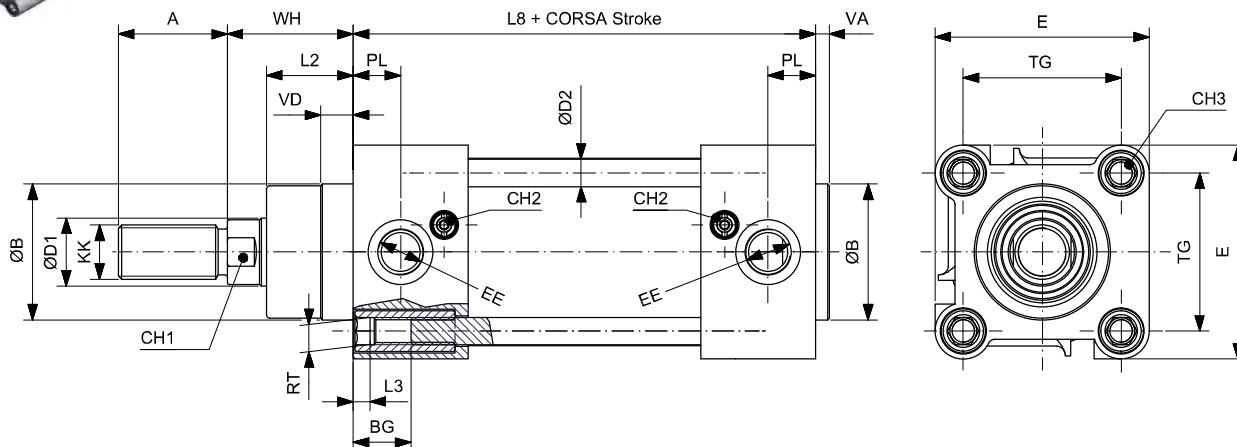
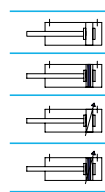
DOPIO EFFETTO
DOUBLE ACTING

CDEØ/...XR

CDEMØ/...XR

CDEAØ/...XR

CDEMAØ/...XR



Ø	ØD1	ØD2	KK	A	ØB	VD	VA	L2	RT	BG	L3	TG	EE	PL	WH	L8	E	CH1	CH2	CH3
32	12	6	M10x1.25	22	30	9.5	4	18	M6	16.5	5	32.5	1/8"G	12.5	26	94	47	10	3	6
40	16	6	M12x1.25	24	35	9.5	4	22	M6	16.5	5	38	1/4"G	14	30	105	54	13	3	6
50	20	8	M16x1.5	32	40	9.5	4	25.5	M8	17.5	5	46.5	1/4"G	14	37	106	63	17	3	8
63	20	8	M16x1.5	32	45	9.5	4	25	M8	17.5	5	56.5	3/8"G	16.5	37	121	74	17	3	8
80	25	10	M20x1.5	40	45	10	4	35	M10	17.5	-	72	3/8"G	17	46	128	93.5	22	4	-
100	25	10	M20x1.5	40	55	10	4	38	M10	17.5	-	89	1/2"G	18	51	138	110	22	4	-
125	32	12	M27x2	54	60	11	6	46	M12	20.5	-	110	1/2"G	18	65	160	137.5	27	4	-

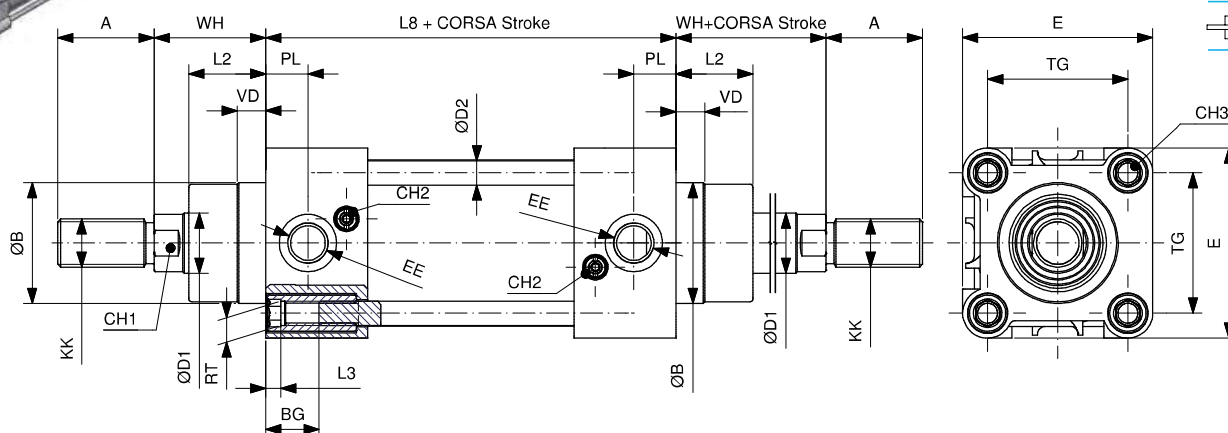
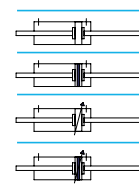
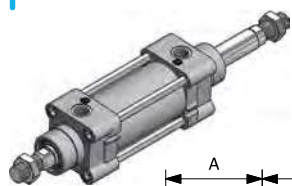
DOPIO EFFETTO PASSANTE
DOUBLE ACTING THROUGH PISTON ROD

CDEPØ/...XR

CDEMPØ/...XR

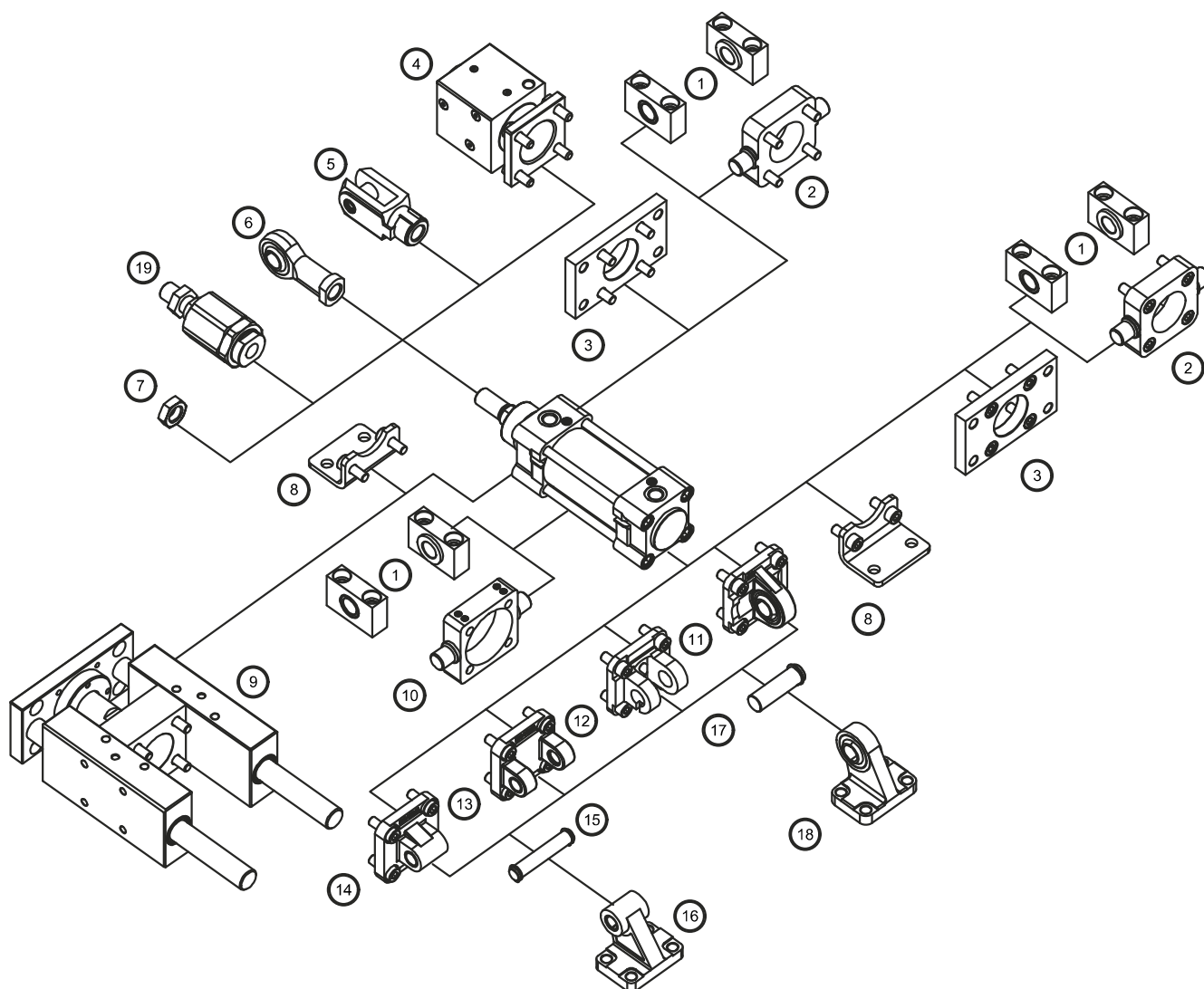
CDEAPØ/...XR

CDEMAPØ/...XR



Ø	ØD1	ØD2	KK	A	ØB	VD	L2	RT	BG	L3	TG	EE	PL	WH	L8	E	CH1	CH2	CH3
32	12	6	M10x1.25	22	30	9.5	18	M6	16.5	5	32.5	1/8"G	12.5	26	94	47	10	3	6
40	16	6	M12x1.25	24	35	9.5	22	M6	16.5	5	38	1/4"G	14	30	105	54	13	3	6
50	20	8	M16x1.5	32	40	9.5	25.5	M8	17.5	5	46.5	1/4"G	14	37	106	63	17	3	8
63	20	8	M16x1.5	32	45	9.5	25	M8	17.5	5	56.5	3/8"G	16.5	37	121	74	17	3	8
80	25	10	M20x1.5	40	45	10	35	M10	17.5	-	72	3/8"G	17	46	128	93.5	22	4	-
100	25	10	M20x1.5	40	55	10	38	M10	17.5	-	89	1/2"G	18	51	138	110	22	4	-
125	32	12	M27x2	54	60	11	46	M12	20.5	-	110	1/2"G	18	65	160	137.5	27	4	-

ACCESSORI DI FISSAGGIO MOUNTING ACCESSORIES



Descrizione Description	Alluminio Alluminium	Acciaio Steel	Acciaio inox Stainless steel
1 Supporto per cerniera intermedia / Support for intermediate hinge (AT4)	-	141	-
2 Cerniera oscillante anteriore-posteriore / Front-rear trunnion (MT5 / MT6)	-	141	-
3 Flangia / Flange (MF1-MF2)	-	139	152
4 Bloccastelo / Rod lock	126	-	-
5 Forcella / Clevis	-	131	147
6 Testa a snodo / Rod end	-	132	148
7 Dado per aste / Piston rod nut	-	130	146
8 Piedino basso / Low-rise pedestal (MS1)	-	138	152
9 Unità di guida / Guide unit	122	-	-
10 Cerniera intermedia / Intermediate hinge (MT4)	-	140	150
11 Cerniera maschio snodata / Male hinge with spherical bearing (MP6)	137	143	-
12 Cerniera femmina stretta per snodo sferico AB6 / Clevis braket, spherical eye, straight AB6	136	142	-
13 Cerniera femmina / Female hinge (MP2)	134	142	150
14 Cerniera maschio / Male hinge (MP4)	135	-	151
15 Perno per cerniera femmina / Pivot for female hinge (AA4)	-	135	150
16 Articolazione a squadra / Square joint (AB7)	137	-	151
17 Perno per cerniera snodata AA6 / Pivot pin, spherical bearing AA6	-	136	-
18 Articolazione a squadra con testina snodata DIN 648 K / Square joint with spherical head DIN 648 K	-	138	-
19 Giunto autoallineante / Self-aligning joint	-	131	-