

Cilindri tondi inox

Stainless steel round cylinder

C6B *profilo pulito*
clean profile



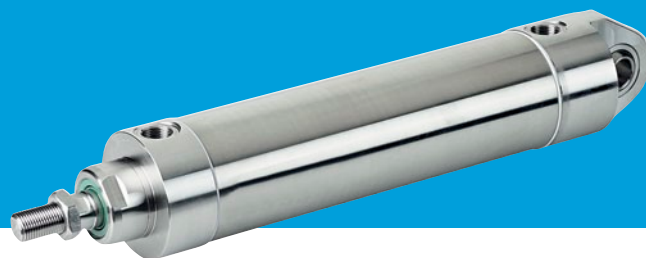
AISI 316

CILINDRI TONDI INOX AISI 316 PROFILO PULITO Ø32-63

AISI 316 STAINLESS STEEL CLEAN PROFILE ROUND CYLINDER Ø32-63

Cilindro dal design essenziale pensato per soddisfare le esigenze del settore pharma e food. L'utilizzo di guarnizioni e lubrificanti certificati FDA, unito alla scelta di una costruzione estremamente pulita in accordo con le principali raccomandazioni internazionali di settore, rendono la scelta del C6B ottimale nelle applicazioni in cui si richiede la massima igiene e pulizia.

Cylinder with an essential design developed to meet the needs of the pharma and food industry. The use of FDA-certified seals and lubricants, combined with the choice of an extremely clean construction in accordance with the main international industry recommendations, make the choice of C6B optimal in applications where maximum hygiene and cleanliness are required.



Informazioni tecniche Technical information

Testate Covers	Acciaio inox AISI 316 Stainless steel AISI 316	Stelo Piston rod	Acciaio inox AISI 316 Stainless steel AISI 316
Tubo Tube	Acciaio inox AISI 316 Stainless steel AISI 316	Fluido Working fluid	Aria compressa filtrata, lubrificata e non Filtered compressed air, lubricated or not
Pistone Piston	Alluminio Aluminium	Temperatura di impiego Working temperature	-20°C +80°C con aria secca -20°C +80°C with dry air
Guarnizioni Seals	Poliuretano/NBR Polyurethane/NBR	Pressione MAX MAX pressure	10 bar
Boccola guida Guiding bush	Bronzo sinterizzato Sintered bronze		

Chiavi di codifica Cylinders key code

Serie Series	Diametro Diameter	Tipo costruttivo Design type	Corsa Stroke	Versione Version	Varianti Variants
C6B Cilindro tondo inox Stainless steel round cylinder	032	A Con testata anteriore filettata With threaded front cover	0... 1000	D Doppio effetto magnetico Double acting magnetic	ST Standard
	040	B Con testate filettate With threaded covers		F Doppio effetto magnetico ammortizzato Double acting magnetic cushioned	VT Guarnizioni FKM (-20°C++150°C) FKM seals (-20°C++150°C)
	050	C Con cerniera maschio MP4 With male hinge MP4		M Doppio effetto passante magnetico Double acting through rod magnetic	VG Guarnizione stelo FKM FKM rod seal
	063	D Con cerniera maschio snodata MP6 With male hinge w/spherical bearing MP6		P Doppio effetto passante magnetico ammortizzato Double acting through rod magnetic cushioned	SD Senza dadi Without nuts
		E Con fori filettati sulla testata posteriore With threaded holes on the rear cover			SP Filetto stelo passo fine Fine thread piston rod
		F Con cerniera femmina stretta AB6 With narrow female hinge AB6			LT Resistente alle basse temperature (-40°C++80°C) Low temperature resistant (-40°C++80°C)
		G Con perni anteriori With front pivot			P.. Stelo prolungato [mm] Extended piston rod [mm]
		H Con perni posteriori With rear pivot			

Esempio Example (C6B040D0050FST)

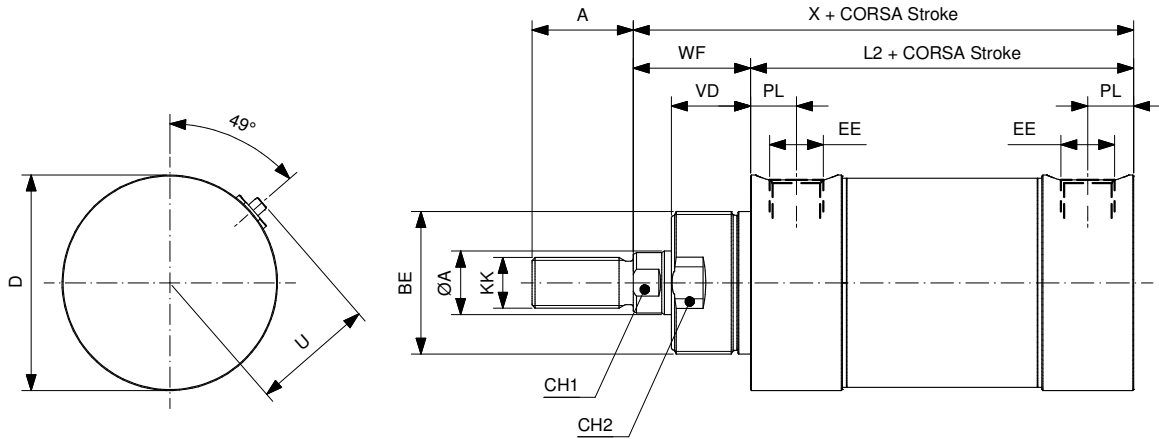
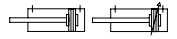
C6B	040	D	0050	F	ST
-----	-----	---	------	---	----

Corse standard [mm] Standard strokes [mm]

Ø	Corse standard [mm] Standard strokes [mm]													
32	10	25	40	50	80	100	125	160	200	250	300	320	400	500
40	10	25	40	50	80	100	125	160	200	250	300	320	400	500
50	10	25	40	50	80	100	125	160	200	250	300	320	400	500
63	10	25	40	50	80	100	125	160	200	250	300	320	400	500

CON TESTATA ANTERIORE FILETTATA WITH THREADED FRONT COVER

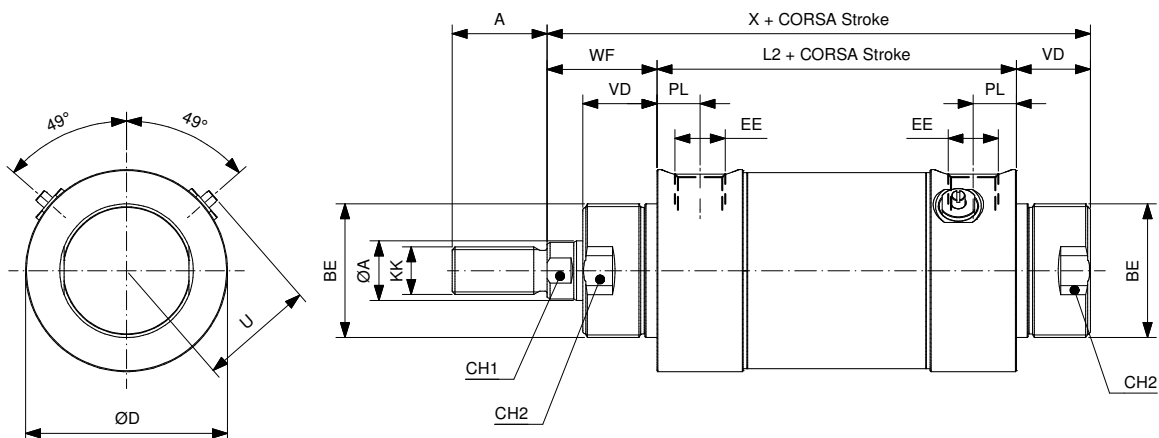
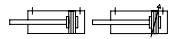
C6BØA...DST - C6BØA...FST



Ø	A	BE	ØD	EE	KK	ØA	PL	VD	U	WF	L2	X	CH1	CH2
32	22	M30x1,5	36	1/8"G	M10x1,25	12	10,5	20	26,5	26	94	120	10	29
40	24	M38x1,5	45	1/4"G	M12x1,25	16	12	22	31	30	105	135	13	36
50	32	M45x1,5	54	1/4"G	M16x1,5	20	11,5	26	39,5	37	106	143	17	42
63	32	M45x1,5	68	3/8"G	M16x1,5	20	14,5	25	38,5	37	121	158	17	42

CON TESTATE FILETTATE WITH THREADED COVERS

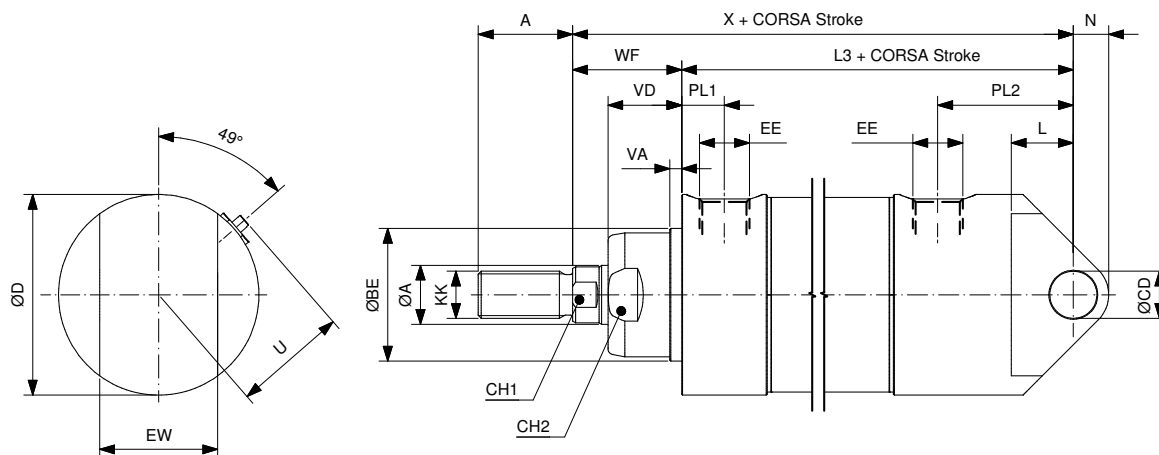
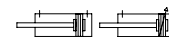
C6BØB...DST - C6BØB...FST



Ø	A	BE	ØD	EE	KK	ØA	PL	VD	U	WF	L2	X	CH1	CH2
32	22	M30x1,5	36	1/8"G	M10x1,25	12	10,5	20	26,5	26	94	140	10	29
40	24	M38x1,5	45	1/4"G	M12x1,25	16	12	22	31	30	105	157	13	36
50	32	M45x1,5	54	1/4"G	M16x1,5	20	11,5	26	39,5	37	106	169	17	42
63	32	M45x1,5	68	3/8"G	M16x1,5	20	14,5	25	38,5	37	121	185	17	42

CON CERNIERA MASCHIO MP4 WITH MALE HINGE MP4

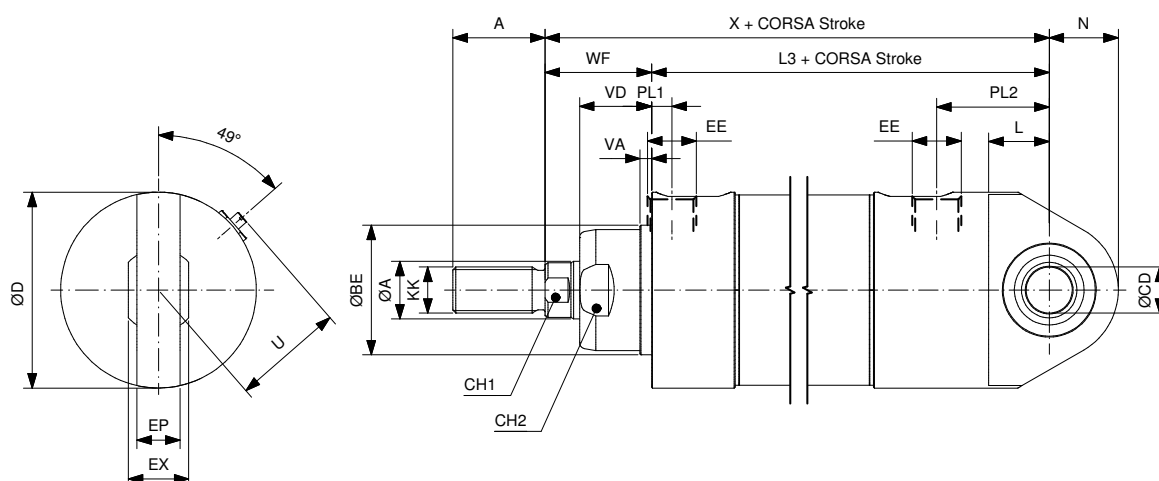
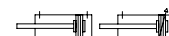
C6BØC...DST - C6BØC...FST



Ø	A	ØBE	ØCD	ØD	EE	EW	KK	ØA	L	N	PL2	PL1	VD	VA	U	WF	L3	X	CH1	CH2
32	22	30	10	36	1/8"G	26	M10x1,25	12	13	9	32,5	10,5	20	4	26,5	26	116	142	10	29
40	24	35	12	45	1/4"G	28	M12x1,25	16	16	10	37	12	22	4	31	30	130	160	13	33
50	32	40	12	54	1/4"G	32	M16x1,5	20	16,5	12	37	11,5	26	4	39,5	37	133	170	17	38
63	32	45	16	68	3/8"G	40	M16x1,5	20	21	12	46	14,5	25	4	38,5	37	153	190	17	42

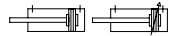
CON CERNIERA MASCHIO SNODATA MP6 WITH MALE HINGE WITH SPHERICAL BEARING MP6

C6BØD...DST - C6BØD...FST

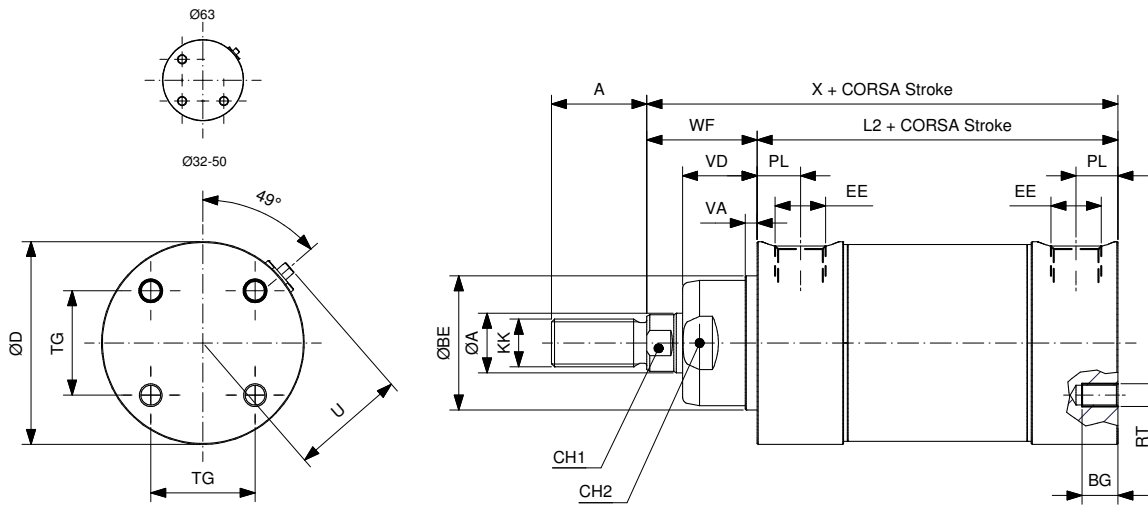


Ø	A	ØBE	ØCD	ØD	EE	EP	EX	KK	ØA	L	N	PL2	PL1	VD	VA	U	WF	L3	X	CH1	CH2
32	22	30	10	36	1/8"G	10,5	14	M10x1,25	12	13	15	32,5	10,5	20	4	26,5	26	116	142	10	29
40	24	35	12	45	1/4"G	12	16	M12x1,25	16	16	19	37	12	22	4	31	30	130	160	13	33
50	32	40	12	54	1/4"G	15	21	M16x1,5	20	16,5	20,5	38,5	11,5	26	4	39,5	37	133	170	17	38
63	32	45	16	68	3/8"G	15	21	M16x1,5	20	21	24	46,5	14,5	25	4	38,5	37	153	190	17	42

CON FORI FILETTATI SULLA TESTATA POSTERIORE WITH THREADED HOLES ON THE REAR COVER

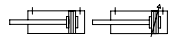


C6BØE...DST - C6BØE...FST

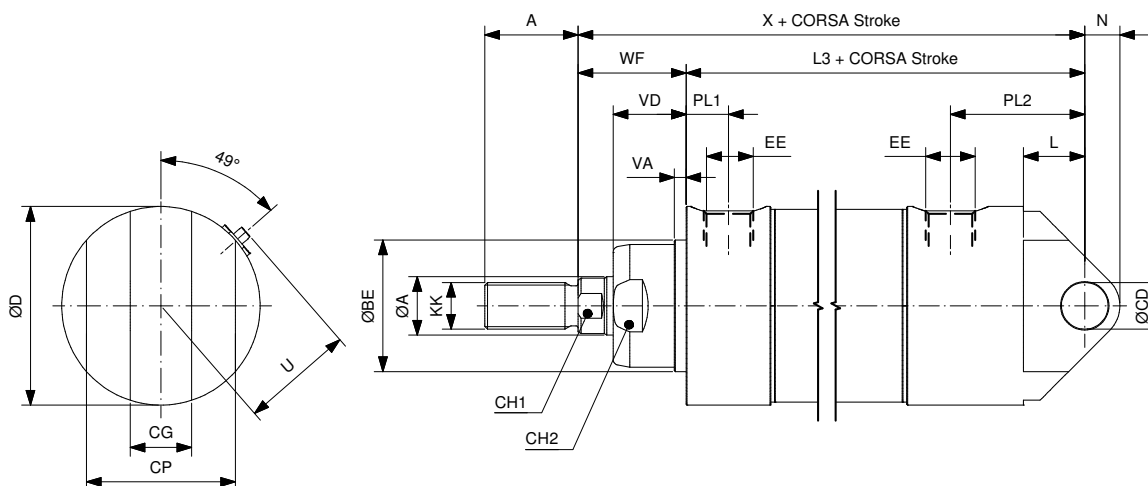


Ø	A	BE	BG	ØD	EE	KK	ØA	PL	RT	TG	VD	VA	U	WF	L2	X	CH1	CH2
32	22	30	6	36	1/8"G	M10x1,25	12	10,5	M4	19	20	4	26,5	26	94	120	10	29
40	24	35	8	45	1/4"G	M12x1,25	16	12	M5	24	22	4	31	30	105	135	13	33
50	32	40	9	54	1/4"G	M16x1,5	20	11,5	M6	28	26	4	39,5	37	106	143	17	38
63	32	45	12	68	3/8"G	M16x1,5	20	14,5	M8	35	25	4	38,5	37	121	158	17	42

CON CERNIERA FEMMINA STRETTA AB6 WITH NARROW FEMALE HINGE AB6



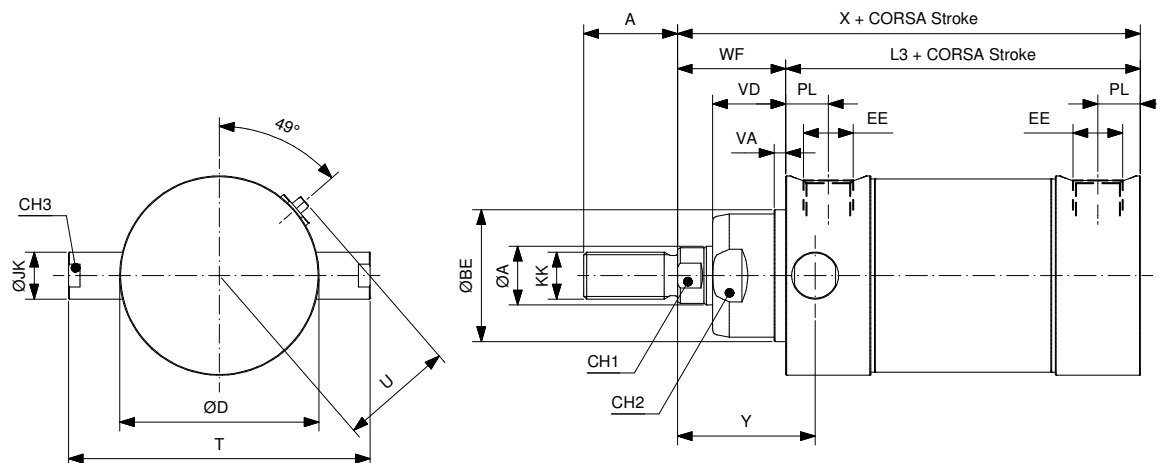
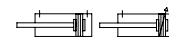
C6BØF...DST - C6BØF...FST



Ø	A	BE	ØCD	ØD	EE	CG	CP	KK	ØA	L	N	PL2	PL1	VD	VA	U	WF	L3	X	CH1	CH2
32	22	30	10	36	1/8"G	14	34	M10x1,25	12	13	9	32,5	10,5	20	4	26,5	26	116	142	10	29
40	24	35	12	45	1/4"G	16	40	M12x1,25	16	16	10	37	12	22	4	31	30	130	160	13	33
50	32	40	12	54	1/4"G	21	45	M16x1,5	20	16,5	12	37	11,5	26	4	39,5	37	133	170	17	38
63	32	45	16	68	3/8"G	21	51	M16x1,5	20	21	12	46	14,5	25	4	38,5	37	153	190	17	42

CON PERNI ANTERIORI WITH FRONT PIVOT

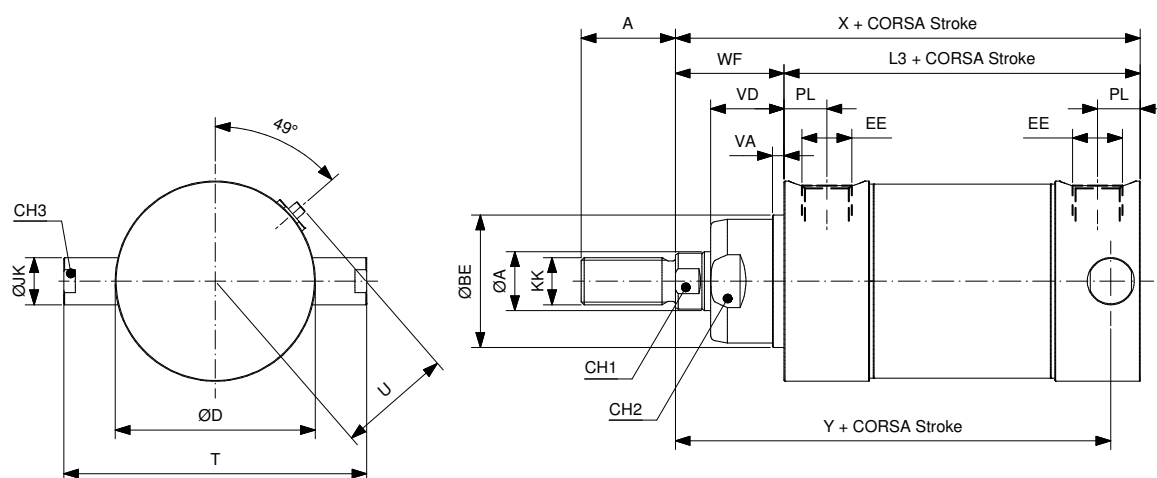
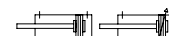
C6BØG...DST - C6BØG...FST



Ø	ØJK	T	Y	A	ØBE	ØD	EE	KK	ØA	PL	VD	VA	U	WF	L3	X	CH1	CH2	CH3
32	12	67	39	22	30	36	1/8"G	M10x1,25	12	10,5	20	4	26,5	26	94	120	10	29	10
40	12	76	43	24	35	45	1/4"G	M12x1,25	16	12	22	4	31	30	105	135	13	33	10
50	16	89	40	32	51	54	1/4"G	M16x1,5	20	11,5	26	4	39,5	37	106	143	17	38	14
63	16	103	47	32	47	68	3/8"G	M16x1,5	20	14,5	25	4	38,5	37	121	158	17	42	14

CON PERNI POSTERIORI WITH REAR PIVOT

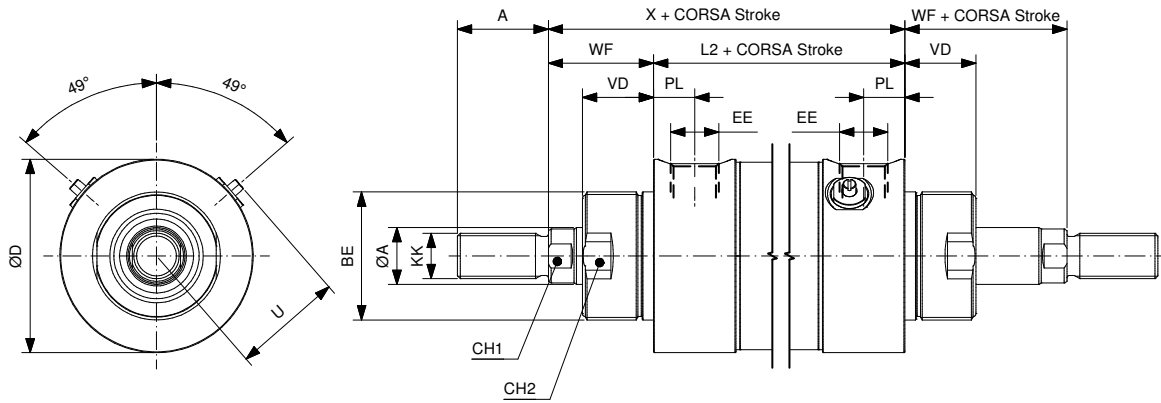
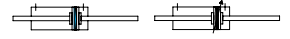
C6BØH...DST - C6BØH...FST



Ø	ØJK	T	Y	A	ØBE	ØD	EE	KK	ØA	PL	VD	VA	U	WF	L3	X	CH1	CH2	CH3
32	12	67	110	22	30	36	1/8"G	M10x1,25	12	10,5	20	4	26,5	26	94	120	10	29	10
40	12	76	122	24	35	45	1/4"G	M12x1,25	16	12	22	4	31	30	105	135	13	33	10
50	16	89	129	32	40	54	1/4"G	M16x1,5	20	11,5	26	4	39,5	37	106	143	17	38	14
63	16	103	148	32	45	68	3/8"G	M16x1,5	20	14,5	25	4	38,5	37	121	158	17	42	14

CON STELO PASSANTE E TESTATE FILETTATE WITH THROUGH ROD AND THREADED COVERS

C6BØA...MST - C6BØA...PST



Ø	A	BE	ØD	EE	KK	ØA	PL	VD	U	WF	L2	X	CH1	CH2
32	22	M30x1,5	36	1/8"G	M10x1,25	12	10,5	20	26,5	26	94	120	10	29
40	24	M38x1,5	45	1/4"G	M12x1,25	16	12	22	31	30	105	135	13	33
50	32	M45x1,5	54	1/4"G	M16x1,5	20	11,5	26	39,5	37	106	143	17	38
63	32	M45x1,5	68	3/8"G	M16x1,5	20	14,5	25	38,5	37	121	158	17	42



Cy.Pag. S.r.l.

Via del Commercio, 13 - 23017 - Morbegno (SO) - Italy

phone: +39 0342 605011 - **fax:** +39 0342 614971 - **email:** info@cypag.com

rev. 00/09.2023